

USEPA Method 608.1 - Organochlorine Pesticides on BPX5

KEYWORDS:

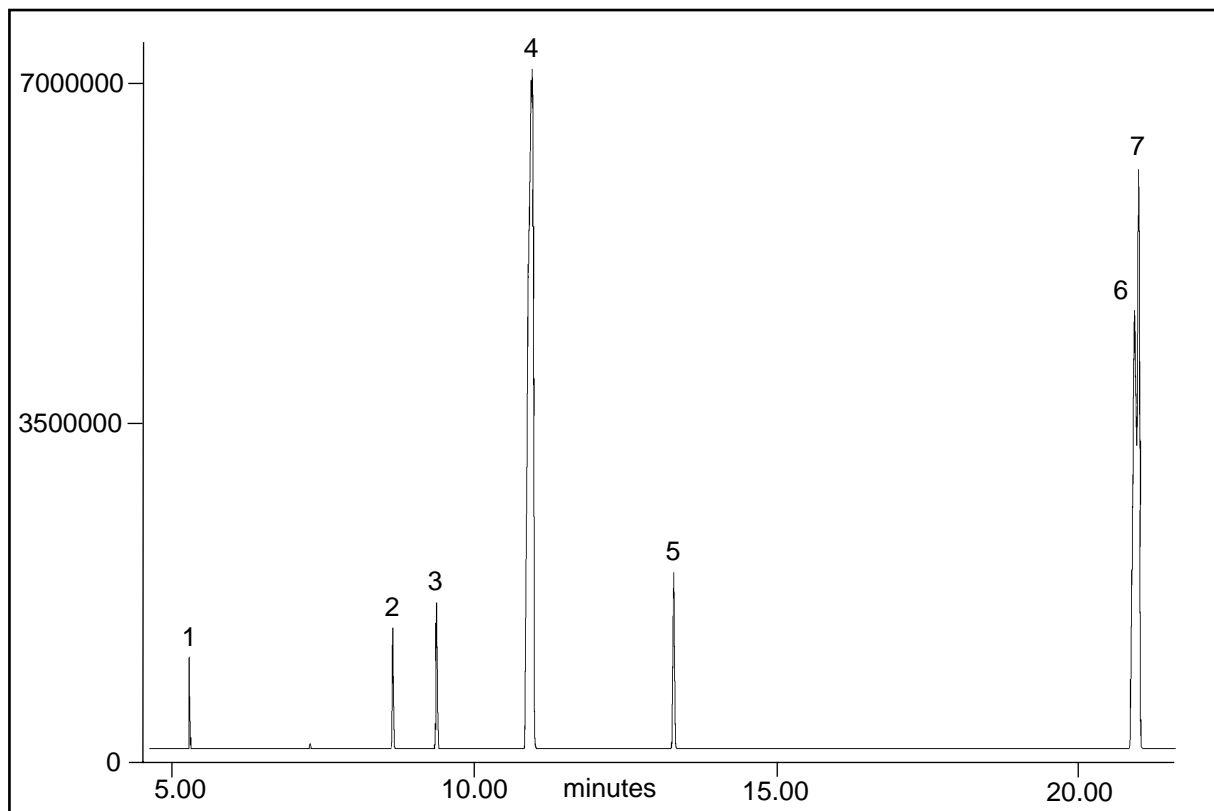
EPA Method 608.1
Chlorinated Pesticides
OCP
GC/MS

**USEPA Method 608.1 - Organochlorine
Pesticides**

Components

Part No.: 054142
Phase: BPX5, 0.25µm
Column: 30m x 0.22mm ID
Initial Temp.: 50°C, 1min
Rate 1: 30°C/min
Temp 2: 150°C
Rate2: 6°C
Final Temp.: 260°C
Detector: 5973 MSD
Injector Mode: Splitless, 0.5min
Carrier Gas: Helium, 30cm/sec
Injection Volume: 1µL
Interface/Source/Quad: 320°C, 250°C, 150°C

1. DBCP
2. Etr Diazole
3. Chloroneb
4. Propachlor
5. PCNB
6. Chlorobenzylate
7. Chloropropylate



visit www.sge.com or contact our technical Customer Support Team on: techsupport@sge.com

SGE International Pty. Ltd.
email: support@sge.com

SGE Incorporated (USA)
email: usa@sge.com

SGE (France) Sarl
email: france@sge.com

SGE Deutschland GmbH
email: germany@sge.com

SGE Japan Inc.
email: sgejpn@itjit.ne.jp

SGE Australia Pty. Ltd.
email: sales@sge.com

SGE Europe Ltd. (UK)
email: uk@sge.com

SGE (Italia) Srl.
email: sge.italia@tin.it

SGE China Service Centre
email: sge@bj.col.com.cn

SGE India
email: sgeindia@bom4.vsnl.net.in