

**KEYWORDS:**

Herbicides

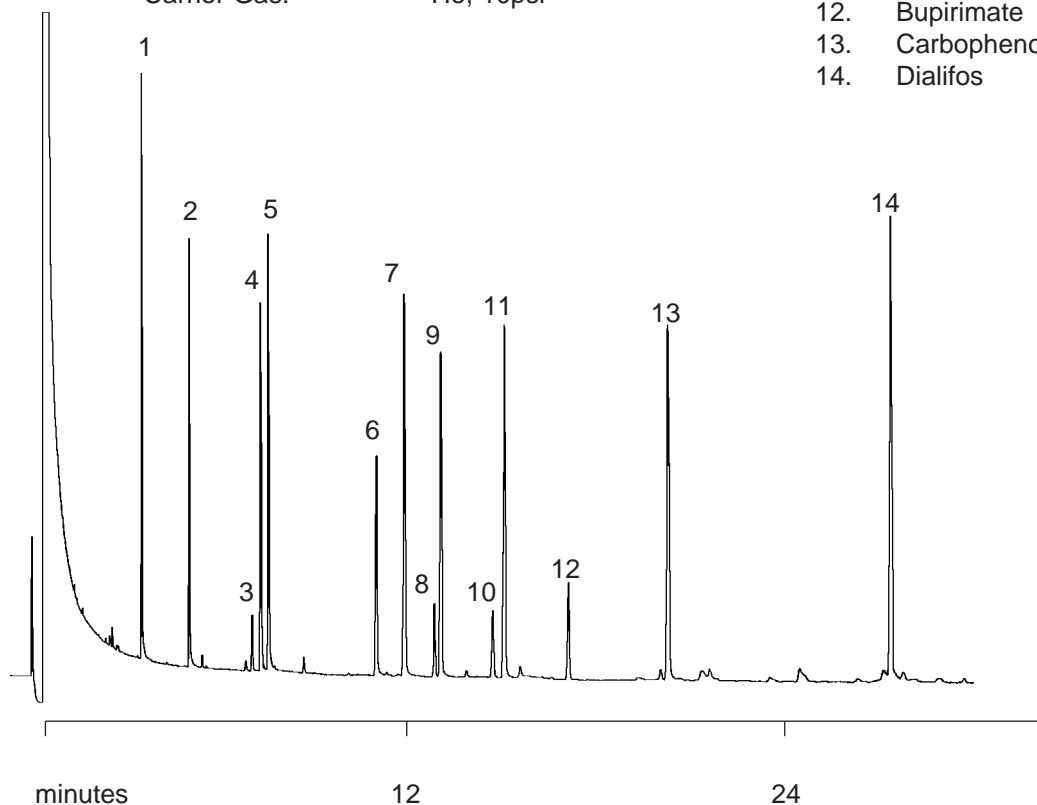
**Notes:** Low bleed nature of the BPX5 phase ensures good detection levels with a NPD detector. Chemically inert phase also ensures no degradation of compounds being analysed.

**HERBICIDE ANALYSIS**

Part No.: 054101  
 Phase: BPX5, 0.25µm  
 Column: 30m x 0.25mm ID  
 Initial Temp.: 90°C, 1 min.  
 Rate 1: 30°C/min  
 Temp.1: 180°C  
 Rate 2: 5°C/min  
 Final Temp.: 260°C, 10 min  
 Detector: NPD  
 Injection Mode: Varian SPI  
 Carrier Gas: He, 10psi

**Components**

1. Metamidofos
2. Acephate
3. Diphenylamine
4. Monocrofos
5. Sulfotep
6. Tolclofos-methyl
7. Fenitrothion
8. Triadimefon
9. Trichloronate
10. Triadimenol
11. Bromophos-ethyl
12. Bupirimate
13. Carbophenothion
14. Dialifos



visit [www.sge.com](http://www.sge.com) or contact our technical Customer Support Team on: [techsupport@sge.com](mailto:techsupport@sge.com)

SGE International Pty. Ltd.  
email: support@sge.com

SGE Incorporated (USA)  
email: usa@sge.com

SGE (France) Sarl  
email: france@sge.com

SGE Deutschland GmbH  
email: germany@sge.com

SGE Japan Inc.  
email: sgejpn@itjit.ne.jp

SGE Australia Pty. Ltd.  
email: sales@sge.com

SGE Europe Ltd. (UK)  
email: uk@sge.com

SGE (Italia) Srl.  
email: sge.italia@tin.it

SGE China Service Centre  
email: sge@bj.col.com.cn

SGE India  
email: sgeindia@bom4.vsnl.net.in