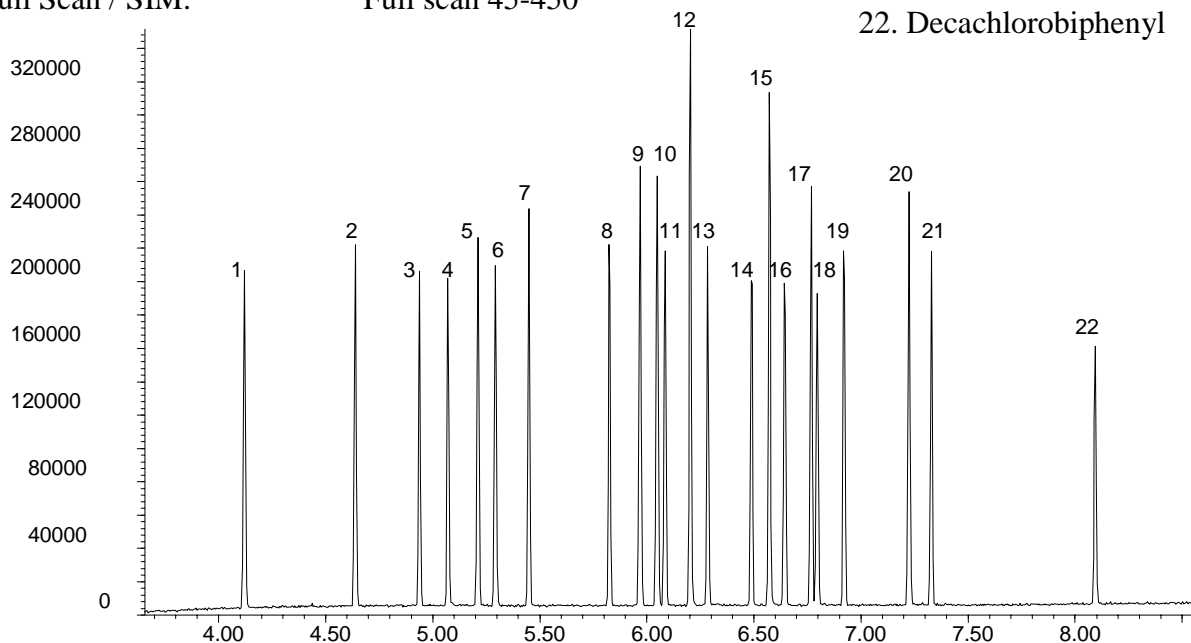


**Phase:** BPX35, 0.1µm film  
**Sample:** 100ppm in dichloromethane  
**Column:** 10m x 0.1 mm ID  
**Initial Temp:** 110°C, 1 min.  
**Rate 1:** 30°C/min to 320°C,  
**Final Temp:** 320°C, 5 min.  
**Detector Type:** MSD  
**Carrier Gas:** He, 50.3 psi  
**Carrier Gas Flow:** 0.4 mL/min.  
**Constant Flow:** On  
**Average Linear Velocity:** 35 cm/sec at 110°C  
**Injection Mode:** Split  
**Split Ratio:** 100:1.  
**Injection Volume:** 1 µL  
**Injection Temperature:** 250°C  
**Autosampler:** No  
**Liner Type:** 4 mm ID Double Taper Liner  
**Liner Part Number:** 092018  
**Column Part Number:** 054699  
**ms-NoVent™ Part no.:** 113400  
**HP5973 restrictor:** 113409  
**Full Scan / SIM:** Full scan 45-450

**Components**

1. 2,4,5,6-tetrachloro-meta-xylene
2. α-BHC
3. γ-BHC
4. β-BHC
5. Heptachlor
6. δ-BHC
7. Aldrin
8. Heptachlorepoxo
9. trans-Chlordane
10. cis-Chlordane
11. Endosulfan A
12. p,p-DDE
13. Dieldrin
14. Endrin
15. p,p-DDD
16. Endosulfan B
17. p,p-DDT
18. Endrin aldehyde
19. Endosulfan sulfate
20. Methoxychlor
21. Endrin ketone
22. Decachlorobiphenyl



visit [www.sge.com](http://www.sge.com) or contact our technical Customer Support Team on: [techsupport@sge.com](mailto:techsupport@sge.com)

SGE International Pty. Ltd. email:support@sge.com	SGE Incorporated (USA) email:usa@sge.com	SGE (France) Sarl email:france@sge.com	SGE Deutschland GmbH email:germany@sge.com	SGE Japan Inc. email:sgejpn@itjit.ne.jp
SGE Australia Pty. Ltd. email:sales@sge.com	SGE Europe Ltd. (UK) email:uk@sge.com	SGE (Italia) Srl. email:sge.italia@tin.it	SGE China Service Centre email:sge@bj.col.com.cn	SGE India email:sgeindia@bom4.vsnl.net.in