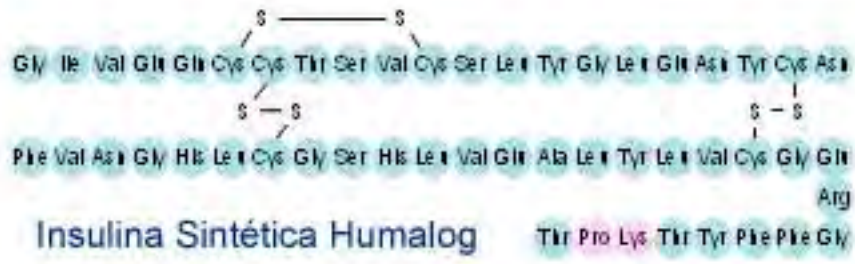
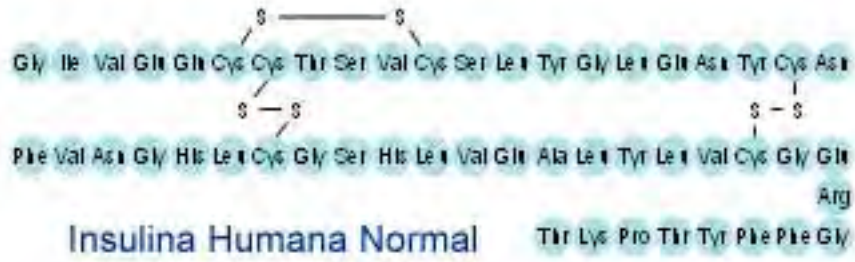
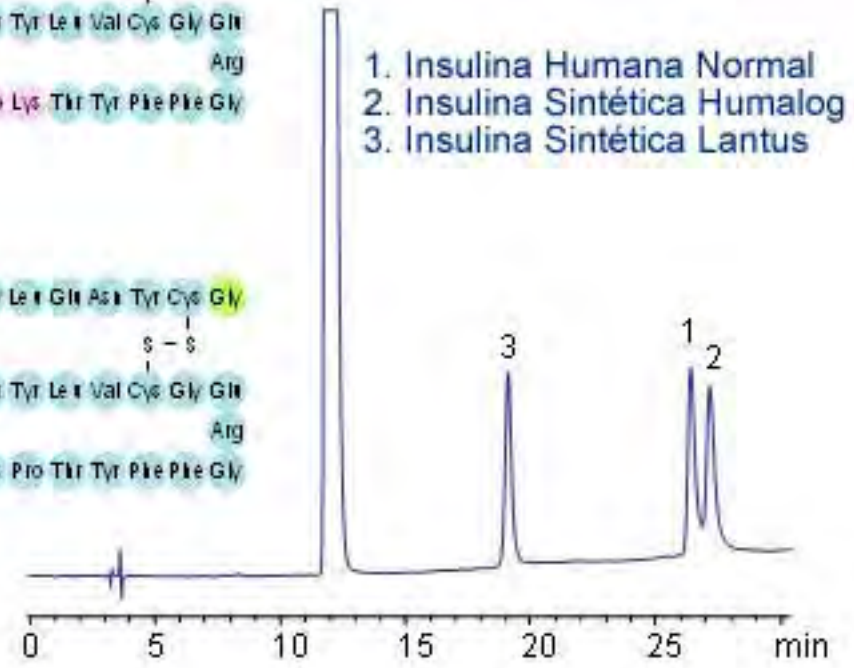


# Análisis de Insulinas Sintéticas y Humanas en Promix MP



**Columna:** Promix MP  
**Dimensiones:** 250x4.6mm  
**Caudal:** 1.0 mL/min  
**ACN:** 30 a 40%, 30'  
**Tampón:** AmAc pH 3.5  
 25mM  
**Detector:** UV 270 nm  
**Inyección:** 5 uL  
**Muestra:** 30cc/mL de  
 cada proteína  
 en 1 mL H2O



Insulina, insulin, Humalog, Lantus, Promix MP, Plasma, SIELC, HPLC